

Enforcing set work, excluding games etc.

Enforcing set work (and other universal settings)

If the student clicks on *Work* in the menu and then ticks the box for *Other*, this gives access to **all** number topics and games.

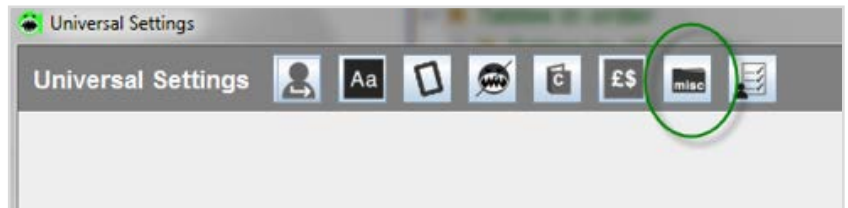
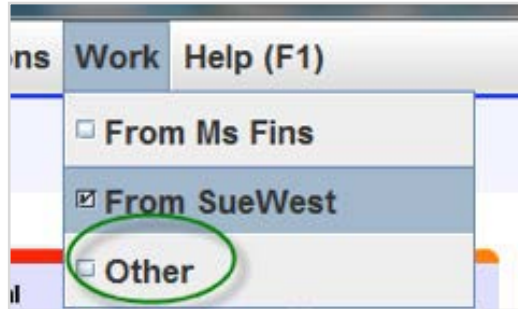
You can, if you wish, choose to stop this from happening and ensure your student accesses **only** set work:

Sign on as a Numbershark *Administrator*.

Go to *Admin\Universal settings*.

Select the icon *misc* and tick the box *Enforce* set work (for all students).

Other useful facilities are provided by this set of buttons and are well worth clicking on to investigate. These include choices regarding excluding games, enforcing set work, groans and beeps, hiding certain courses, disallowing peeps, different sign-on procedures, fonts, archiving etc.

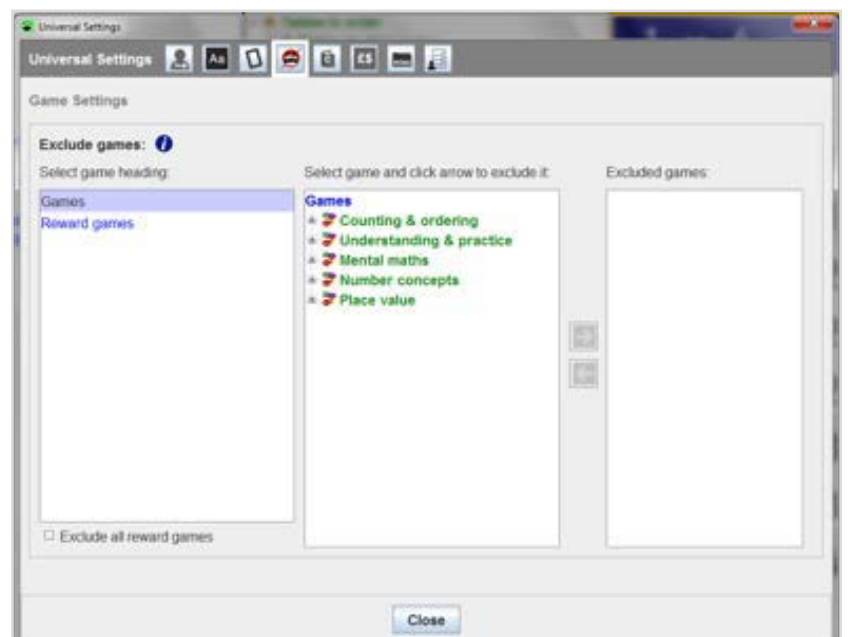
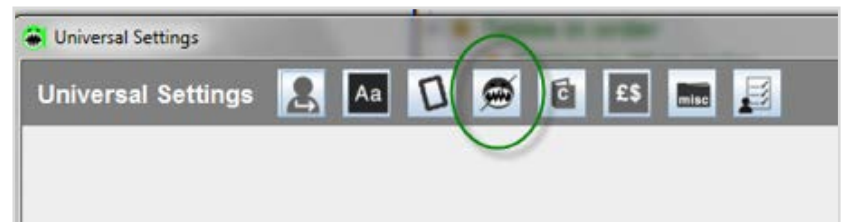


Excluding particular games (and other settings choices)

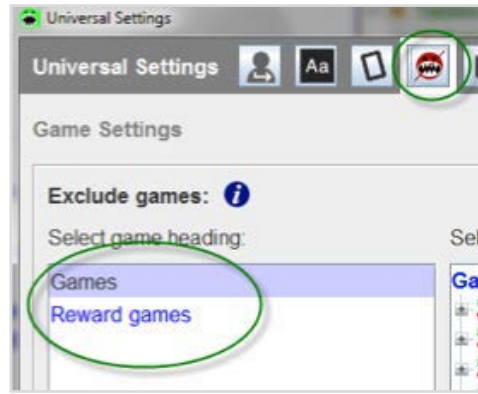
Signed on as a Numbershark *Administrator*, go to *Admin\universal settings* if you wish to block specific games for all students.

Click on the crossed-out shark icon.

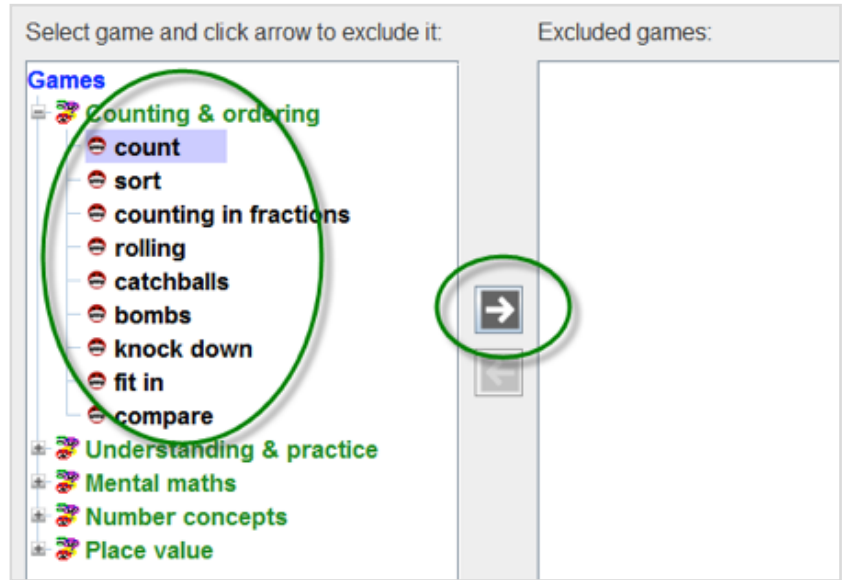
A new window appears.



Select the main games or the reward games.



Select the game(s) you wish to exclude and then click on the arrow. The game will move into the panel on the right for excluded games.



You can also exclude particular games for **individual** students(s) in the *General student management* screen under *Settings* options.

Several other useful settings are possible from this row of buttons. Bear in mind students can override less sensitive areas e.g. font, keypad, groans, reward games frequency (unlike when *Universal settings* are used).

